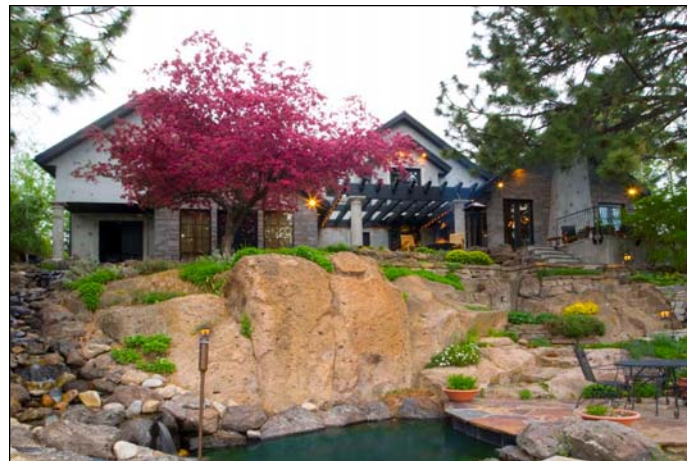


## Features

- 4,370 sq ft main residence with 3 bedrooms, private office, 3 1/2 baths, music room, garden room, formal dining & much more.
- Plus a 1,450 sq ft apartment...great room with fireplace, 2 bedrooms, full bath, maple kitchen, SS appliances, walnut flooring, transom doors & private entrance
- Large double lot with 100' of river frontage
- Real Camas stone and stucco exterior with precast concrete trim, key stones & columns
- Extensive landscaping with a custom water feature, ponds & babbling brook
- Rear deck for entertaining with custom pavers, large beam pergola with drip and mist irrigation.
- Gourmet kitchen with huge marble island, custom cabinetry, 60" Viking range, two dishwashers, custom sinks, copper counter tops, commercial refrigerator & original artwork
- High quality distressed finish on all cabinetry, doors, trim and bookcases
- Grand living room with 6 French doors, custom brick fireplace & unique chandelier
- Garden room with cabinets, 3 French doors & a river rock floor with drain
- Master suite with custom bookcases, 5 closets, laundry room & a Roman bathroom with marble walk-in shower & Horchow vanities
- Formal dining with custom bookcases & a real fireplace with precast mantle
- Entertainment room with balcony, full surround sound system, curved ceiling, pool table & private office with many built-ins
- Walnut & marble flooring
- Oversized garage with workshop & storage
- Basement with wine room & a mechanical storage room
- 3 gas furnaces with air filters & air conditioning
- Custom sound system, many speakers & computer wiring with Smart Box
- Deluxe interior & exterior lighting
- Garden storage shed
- Complete list of all features is available

[www.riverfronthomebend.com](http://www.riverfronthomebend.com)



**Private  
Two  
Bedroom  
Apartment**

# Old World Inspiration



**Stunning  
Riverfront Estate  
Bend, Oregon  
\$1,450,000**



[www.riverfronthomebend.com](http://www.riverfronthomebend.com)

**Gary Everett**

Principal Broker, CCIM

**Joan Steelhammer**

Broker

**Steve Scott Realtors**

685 SE Third St Bend, OR 97702

Office 541-388-8989

Joan Cell 541-419-3717

Gary Cell 541-480-6130

Email [joan@joansteelhammer.com](mailto:joan@joansteelhammer.com)

[gary@garyeverett.com](mailto:gary@garyeverett.com)

**Steve  
Scott**  
Realtors®

Leaders in Central Oregon Real Estate



Please call Joan or Gary for additional information or to preview this property.

# Camelot Awaits You

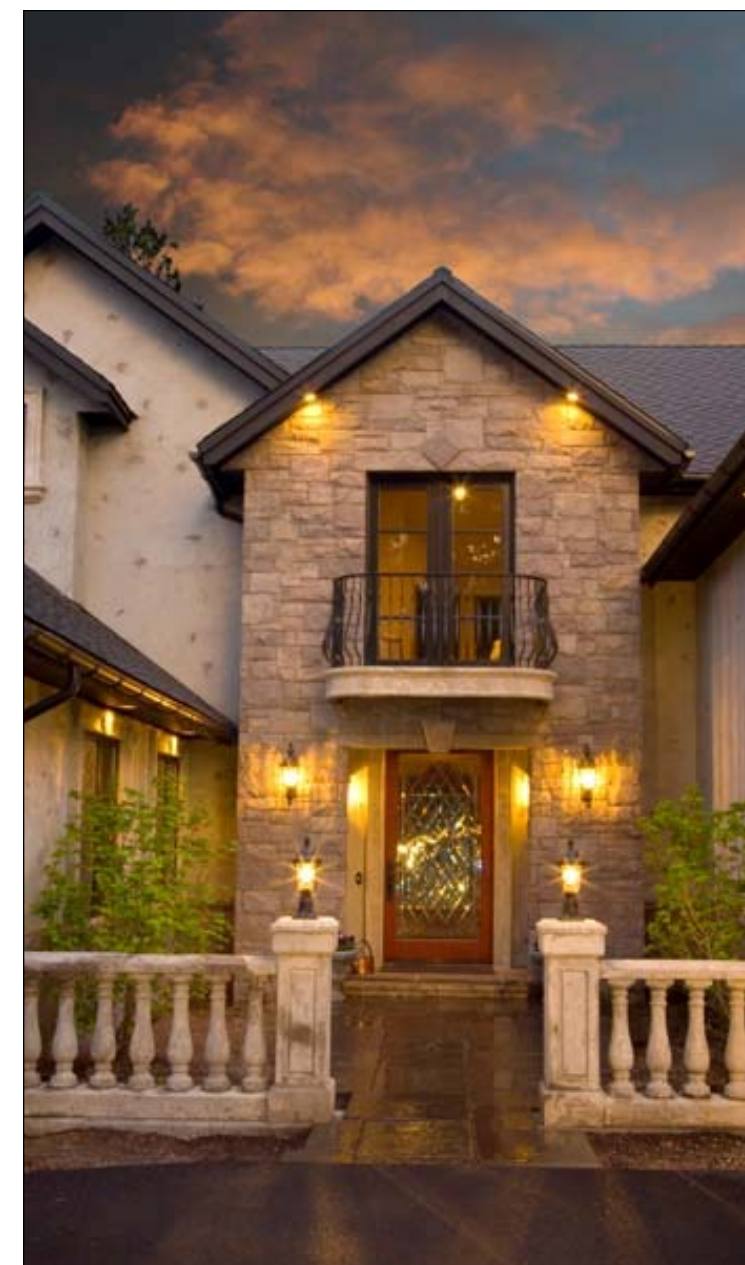
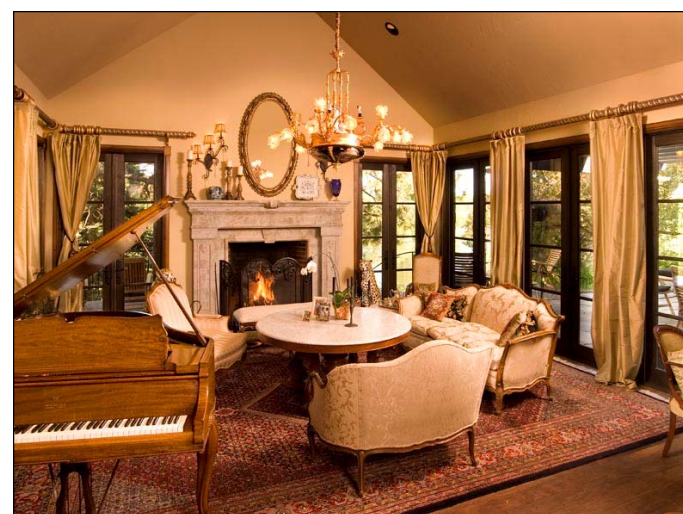
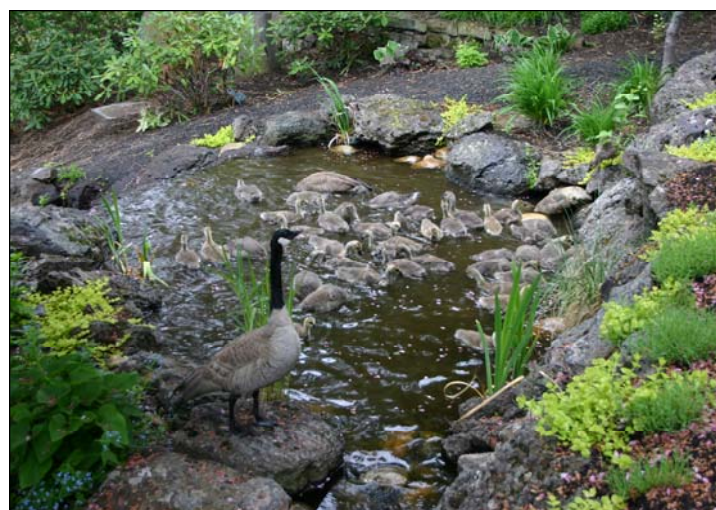
The inspiration for the design of this unique stone residence was to create an “Old World” home that looks and feels like it has been nestled on the banks of the river for over a century. It was constructed on the edge of historic rim rock overlooking terraced yards and has sweeping views of the Deschutes River. It has become a bird sanctuary and is part of the habitat of otters and beavers. This home is perfect for entertaining with great outdoor living space with a huge pergola and an incredible water feature with a babbling brook. Being true to the “Old World” feel, the custom cabinets, walnut flooring and all the doors & trim were distressed and then a high quality finish was applied. The Camas stone exterior was painstakingly installed plus the custom stucco finish was also distress. The exterior of all the windows and doors have been wrapped with masonry trim and several columns installed.

The residence features main level living plus two guest suites with bathrooms, private office, entertainment/music room and 2 second story steel balconies. The spacious kitchen is a chef’s delight with a huge marble island, Viking oven/range with custom artwork, European farm sinks, copper counter tops and a restaurant refrigerator. The custom stone fireplace is the focal point of the Grand Living Room with 6 French doors, custom window treatments and a unique chandelier. Enjoy dinner parties in front of the real fireplace and custom bookcases. The master suite overlooks the river and water feature and has 5 closets, custom entertainment center/bookcase and a Roman bathroom with marble shower and Horchow vanities. In addition, a large apartment with a private entrance was constructed over the deep garage/shop and features 2 bedrooms, great room with fireplace, maple kitchen and walnut flooring.

This double lot has several unique historical features and there are many huge pine trees, stone walls and metal fencing. There is extensive landscaping with a path of lilacs, natural stone steps to the river, secure side yard for pets and thousands of plants. This home is truly a work of art.

526 NW Harmon Blvd Bend, Oregon 97701 **\$1,450,000**

*It would cost over \$3,500,000 to replicate this home in this setting..great value!  
The Owners are licensed Realtors who designed and built this riverfront estate.*



Original Oil Mural by Annie Ferder  
[www.riverfronthomebend.com](http://www.riverfronthomebend.com)